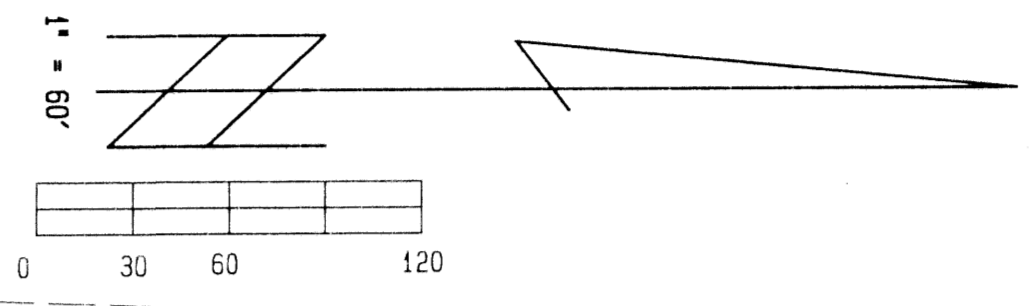
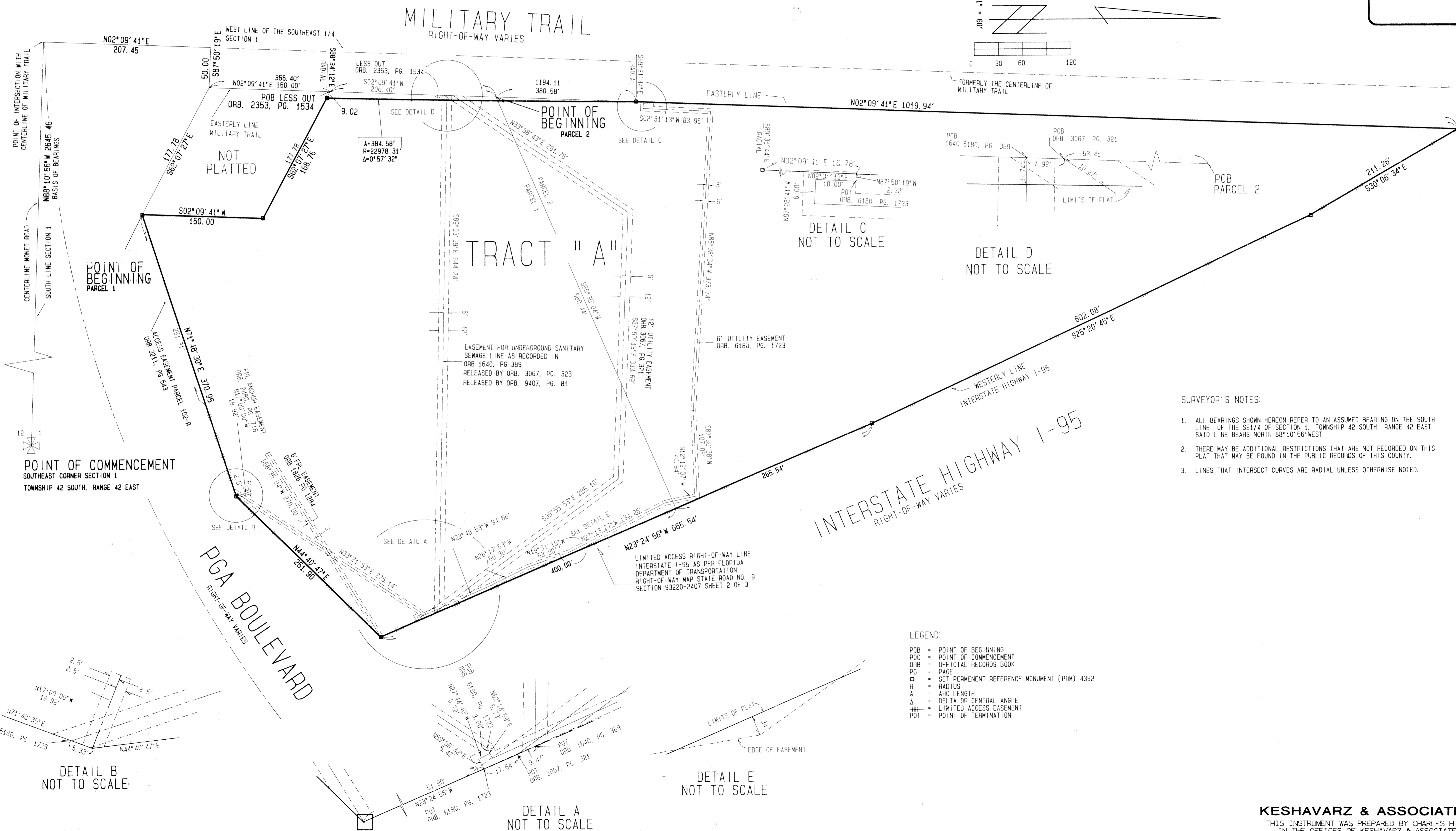


HOTEL COMPLEX PLAT

BEING A PORTION OF SECTION 1, TOWNSHIP 42 SOUTH,
RANGE 42 EAST, CITY OF PALM BEACH GARDENS
PALM BEACH COUNTY, FLORIDA

SHEET 2 OF 2

JUNE 1997



SURVEYOR'S NOTES:

1. ALL BEARINGS SHOWN HEREON REFER TO AN ASSUMED BEARING ON THE SOUTH LINE OF THE SE 1/4 OF SECTION 1, TOWNSHIP 42 SOUTH, RANGE 42 EAST SAID LINE BEARS NORTH, 89°10'56\"/>

LEGEND:

- POB = POINT OF BEGINNING
- POC = POINT OF COMMENCEMENT
- ORB = OFFICIAL RECORDS BOOK
- PG = PAGE
- PRM = SET PERMANENT REFERENCE MONUMENT (PRM) 4392
- R = RADIUS
- A = ARC LENGTH
- Δ = DELTA OR CENTRAL ANGLE
- = LIMITED ACCESS EASEMENT
- POT = POINT OF TERMINATION

TAZ 31

SUBDIVISION * HOTEL COMPLEX
 BOOK 79 PAGE 166
 FLOOD MAP *
 FLOOD ZONE
 ZONING
 QUAD *
 ZIP CODE
 PUD NAME City of Palm Beach Gardens

KESHAVARZ & ASSOCIATES, INC.
 THIS INSTRUMENT WAS PREPARED BY CHARLES H. ANDERSON
 IN THE OFFICES OF KESHAVARZ & ASSOCIATES, INC.
 1280 N. CONGRESS AVENUE, SUITE 206
 WEST PALM BEACH, FLORIDA 33409
 (561) 689-8600 / FAX 689-7476